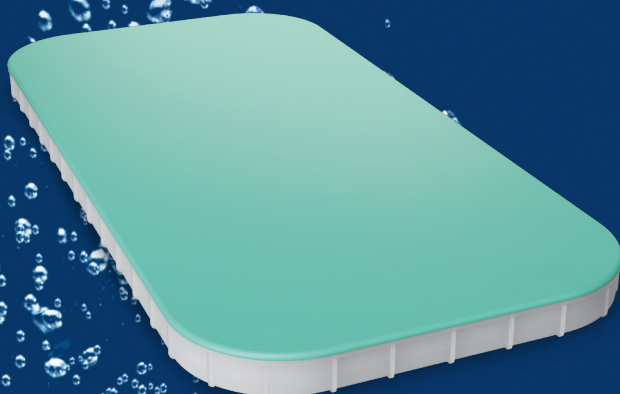
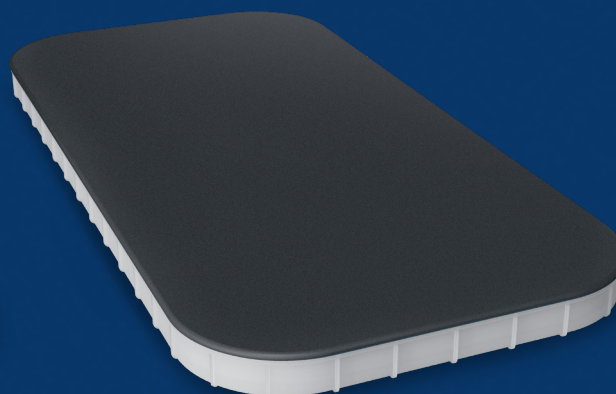


# Ecoflex® Plate



SILICONE



EPDM

## ECOFLEX® PLATE SILICONE, OPERATING RANGE



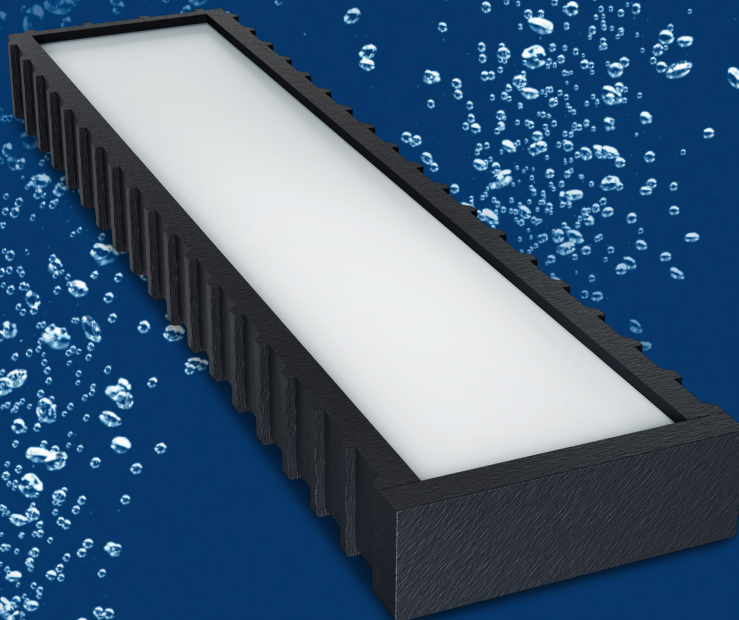
Model	Pore size $\mu\text{m}$	Range flow rate (Nm <sup>3</sup> /h) min-max	Optimal flow rate (Nm <sup>3</sup> /h)	Perforated area in m <sup>2</sup>	Standard connection	Max temperature Celsius/ Fahrenheit	Operating
ECOPLATE50S	60	6-24	12	0,12	1" M	230°C / 446°F	continous / intermittent
ECOPLATE100S	100	8-28	16	0,12	1" M	230°C / 446°F	continous / intermittent
ECOPLATE150S	150	10-32	20	0,12	1" M	230°C / 446°F	continous / intermittent

## ECOFLEX® PLATE EPDM, OPERATING RANGE



Model	Pore size $\mu\text{m}$	Range flow rate (Nm <sup>3</sup> /h) min-max	Optimal flow rate (Nm <sup>3</sup> /h)	Perforated area in m <sup>2</sup>	Standard connection	Max temperature Celsius/ Fahrenheit	Operating
ECOPLATE50S	60	6-24	12	0,12	1" M	130°C / 266°F	continous / intermittent
ECOPLATE100S	100	8-28	16	0,12	1" M	130°C / 266°F	continous / intermittent
ECOPLATE150S	150	10-32	20	0,12	1" M	130°C / 266°F	continous / intermittent

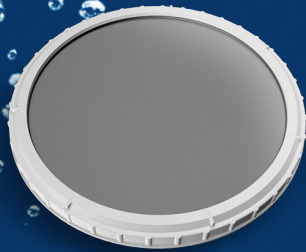
# Newair Tape



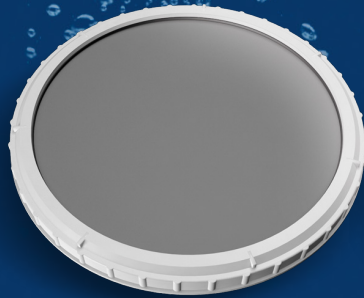
## NEWAIR TAPE, OPERATING RANGE

Model	Pore size $\mu\text{m}$	Range flow rate ( $\text{Nm}^3/\text{h}$ ) min-max	Optimal flow rate ( $\text{Nm}^3/\text{h}$ )	Perforated area in $\text{m}^2$	Standard connection	Max temperature Celsius/ Fahrenheit	Operating
Newair Tape 500	fine	4-12	7	0,05	1" M	80°C / 176°F	continous / intermittent
Newair Tape 1000	fine	8-24	14	0,1	1" M	80°C / 176°F	continous / intermittent
Newair Tape 1500	fine	10-36	21	0,15	1" M	80°C / 176°F	continous / intermittent

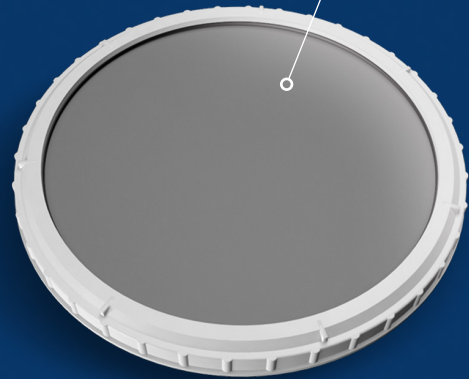
Ecoflex<sup>®</sup>



**XS9"**

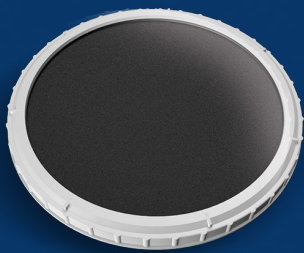


**12"**

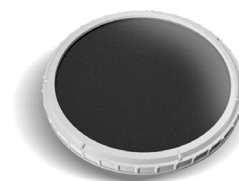


**SILICONE**

**XL14"**



**EPDM**



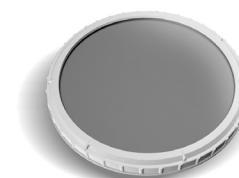
## ECOFLEX® EPDM DISC DIFFUSER SERIES 12"

### OPERATING RANGE

Model	Pore size µm	Range flow rate (Nm <sup>3</sup> /h) min-max	Optimal flow rate (Nm <sup>3</sup> /h)	Standard connection	Max temperature Celsius/ Fahrenheit	Operating procedure	Application
EC050D	60	2-8	5	1" M	130°C/266°F	continous intermittent	Aeration tank
EC0100D	100	3-10	6	1" M	130°C/266°F	continous intermittent	Aeration tank, anaerobic sludge digestion
EC0150D	150	3-14	8	1" M	130°C/266°F	continous intermittent	Aeration tank, anaerobic sludge digestion
<b>Membrane in NBR, PTFE. Coated, Plasma treated, are available on request</b>							
EC050D HE	60	2-9	5	1" M	130°C/266°F	continous intermittent	Aeration tank

### DIMENSION

Type	Total height (mm)	Diameter total (mm)	Diameter effective (mm)	Over all height above air distributor (mm)	Perforated area (m <sup>2</sup> )	Total weight (kg)
Ecoflex®	93	300	240	68	0,05	1,1
<b>Connection 3/4"F, 3/4"M, 1"F or NPT thread, available on request</b>						



## ECOFLEX® SILICONE DISC DIFFUSER SERIES 12"

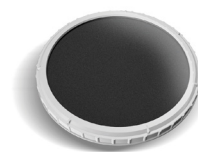
### OPERATING RANGE

Model	Pore size µm	Range flow rate (Nm <sup>3</sup> /h) min-max	Optimal flow rate (Nm <sup>3</sup> /h)	Standard connection	Max temperature Celsius/ Fahrenheit	Operating procedure	Application
EC050S	60	2-8	5	1" M	230°C/446°F	continous intermittent	Aeration tank
EC0100S	100	3-10	6	1" M	230°C/446°F	continous intermittent	Aeration tank, anaerobic sludge digestion
EC0150S	150	3-14	8	1" M	230°C/446°F	continous intermittent	Aeration tank, anaerobic sludge digestion
<b>Membrane in NBR, PTFE coated, Plasma treated, available on request</b>							
EC050S HE	60	2-9	5	1" M	230°C/446°F	continous intermittent	Aeration tank

### DIMENSION

Type	Total height (mm)	Diameter total (mm)	Diameter effective (mm)	Over all height above air distributor (mm)	Perforated area (m <sup>2</sup> )	Total weight (kg)
Ecoflex®	93	300	240	68	0,05	1,1
<b>Connection 3/4"F, 3/4"M, 1"F or NPT thread, available on request</b>						

## ECOFLEX® XS EXTRA SMART SERIES 9" EPDM OPERATING RANGE



Model	Pore size µm	Range flow rate (Nm <sup>3</sup> /h) min-max	Optimal flow rate (Nm <sup>3</sup> /h)	Standard connection	Max temperature Celsius/ Fahrenheit	Operating procedure	Application
ECOXS50D	60	1-7	4	3/4" M	130°C / 266° F	continous intermittent	Aeration tank
ECOXS100D	100	1,5-8	6	3/4" M	130°C / 266° F	continous intermittent	Aeration tank, anaerobic sludge digestion
ECOXS150D	150	1,8-10	8	3/4" M	130°C / 266° F	continous intermittent	Aeration tank, anaerobic sludge digestion

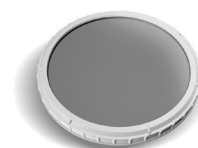
Membrane in NBR, PTFE. Coated, Plasma treated, are available on request

### DIMENSION

Type	Total height (mm)	Diameter total (mm)	Diameter effective (mm)	Over all height above air distributor (mm)	Perforated area (m <sup>2</sup> )	Total weight (kg)
Ecoflex® XS	93	240	200	73	0,03	0,7

Connection 3/4F, 1" M, 1" F or NPT thread, available on request

## ECOFLEX® XS EXTRA SMART SERIES 9" SILICONE OPERATING RANGE



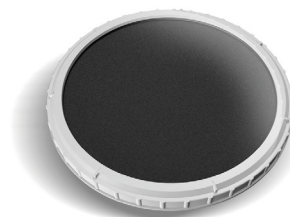
Model	Pore size µm	Range flow rate (Nm <sup>3</sup> /h) min-max	Optimal flow rate (Nm <sup>3</sup> /h)	Standard connection	Max temperature Celsius/ Fahrenheit	Operating procedure	Application
ECOXS50S	60	1-7	4	3/4" M	230°C / 446° F	continous intermittent	Aeration tank
ECOXS100S	100	1,5-8	6	3/4" M	230°C / 446° F	continous intermittent	Aeration tank, anaerobic sludge digestion
ECOXS150S	150	1,8-10	8	3/4" M	230°C / 446° F	continous intermittent	Aeration tank, anaerobic sludge digestion

Membrane in NBR, PTFE. Coated, Plasma treated, are available on request

### DIMENSION

Type	Total height (mm)	Diameter total (mm)	Diameter effective (mm)	Over all height above air distributor (mm)	Perforated area (m <sup>2</sup> )	Total weight (kg)
Ecoflex® XS	93	240	200	73	0,03	0,7

Connection 3/4F, 1" M, 1" F or NPT thread, available on request



## ECOFLEX® XL EXTRA LARGE DISC DIFFUSER SERIES 14" EPDM OPERATING RANGE

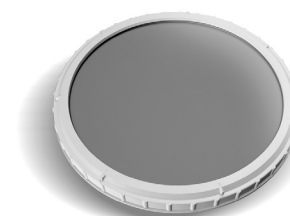
Model	Pore size µm	Range flow rate (Nm <sup>3</sup> /h) min-max	Optimal flow rate (Nm <sup>3</sup> /h)	Standard connection	Max temperature Celsius/ Fahrenheit	Operating procedure	Application
ECOXL50D	60	3-15	9	1" M	130°C / 266° F	continous intermittent	Aeration tank
ECOXL100D	100	4-18	10	1" M	130°C / 266° F	continous intermittent	Aeration tank, anaerobic sludge digestion
ECOXL150D	150	4,5-22	12	1" M	130°C / 266° F	continous intermittent	Aeration tank, anaerobic sludge digestion

Membrane in NBR, PTFE. Coated, Plasma treated, are available on request

### DIMENSION

Type	Total height (mm)	Diameter total (mm)	Diameter effective (mm)	Over all height above air distributor (mm)	Perforated area (m <sup>2</sup> )	Total weight (kg)
Ecoflex® XL	93	360	310	68	0,075	1,6

Connection 3/4F, 3/4"M, 1"F or NPT thread, available on request



## ECOFLEX® XL EXTRA LARGE DISC DIFFUSER SERIES 14" SILICONE OPERATING RANGE

Model	Pore size µm	Range flow rate (Nm <sup>3</sup> /h) min-max	Optimal flow rate (Nm <sup>3</sup> /h)	Standard connection	Max temperature Celsius/ Fahrenheit	Operating procedure	Application
ECOXL50S	60	3-15	9	1" M	230°C / 446° F	continous intermittent	Aeration tank
ECOXL100S	100	4-18	10	1" M	230°C / 446° F	continous intermittent	Aeration tank, anaerobic sludge digestion
ECOXL150S	150	4,5-22	12	1" M	230°C / 446° F	continous intermittent	Aeration tank, anaerobic sludge digestion

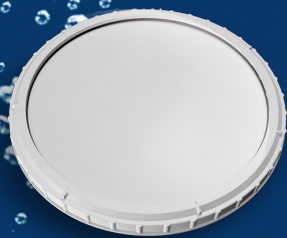
Membrane in NBR, PTFE.Coated, Plasma treated, are available on request

### DIMENSION

Type	Total height (mm)	Diameter total (mm)	Diameter effective (mm)	Over all height above air distributor (mm)	Perforated area (m <sup>2</sup> )	Total weight (kg)
Ecoflex® XL	93	360	310	68	0,075	1,6

Connection 3/4F, 3/4"M, 1"F or NPT thread, available on request

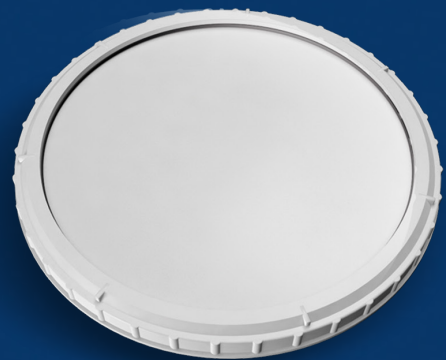
# Newair®



**XS9"**



**12"**



**XL14"**



## NEWAIR® XS EXTRA SMART SERIES 9" SPECIAL HDPE OPERATING RANGE

Model	Pore size $\mu\text{m}$	Range flow rate (Nm <sup>3</sup> /h) min-max	Optimal flow rate (Nm <sup>3</sup> /h)	Standard connection	Max temperature Celsius/ Fahrenheit	Operating procedure	Application
NWD XS9"	fine	1,5 - 8	4	3/4" M	80°C / 176° F	continuous intermittent	Aeration tank

## DIMENSION

Type	Total height (mm)	Diameter total (mm)	Diameter effective (mm)	Over all height above air distributor (mm)	Perforated area (m <sup>2</sup> )	Total weight (kg)
NWD XS9"	93	240	193	73	0,03	0,8

Connection 3/4F, 1"M, 1"F or NPT thread, available on request





## NEWAIR® DISC DIFFUSER SERIES 12"

### OPERATING RANGE

Model	Pore size variable	Range flow rate (Nm <sup>3</sup> /h) min-max	Optimal flow rate (Nm <sup>3</sup> /h)	Standard connection	Max temperature Celsius/ Fahrenheit	Operating procedure	Application
NWD280	fine	4-12	6	1" M	80°C/176°F	continuous intermittent	Aeration tank

### DIMENSION

Type	Total height (mm)	Diameter total [mm]	Diameter effective [mm]	Over all height above air distributor [mm]	Perforated area [m <sup>2</sup> ]	Fixed porous membrane	Total weight [kg]
NWD280	93	300	240	68	0,05	HDPE	1,35

Connection 3/4F, 1" M, 1" F or NPT thread, available on request



## NEWAIR® XS EXTRA LARGE SERIES 14" DISC DIFFUSER SPECIAL HDPE

### OPERATING RANGE

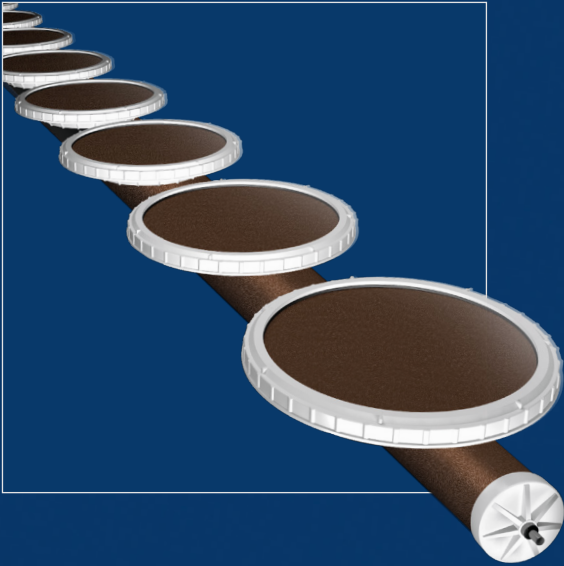
Model	Pore size µm	Range flow rate (Nm <sup>3</sup> /h) min-max	Optimal flow rate (Nm <sup>3</sup> /h)	Standard connection	Max temperature Celsius/ Fahrenheit	Operating procedure	Application
NWD XL14"	fine	5 - 18	10	1" M	80°C / 176° F	continuous intermittent	Aeration tank

### DIMENSION

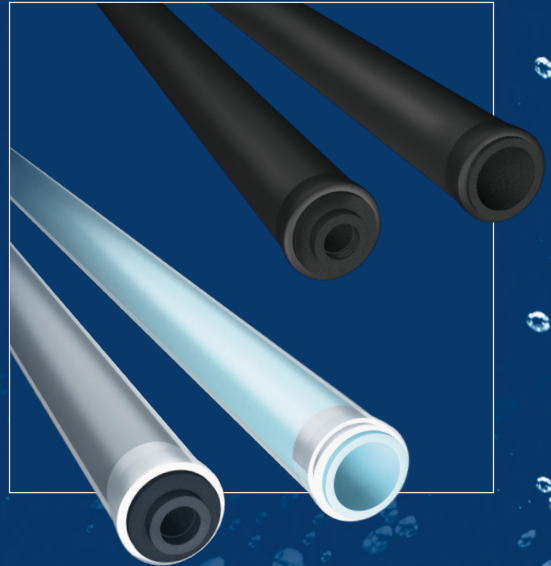
Type	Total height (mm)	Diameter total (mm)	Diameter effective (mm)	Over all height above air distributor (mm)	Perforated area (m <sup>2</sup> )	Total weight (kg)
NWD XL14"	93	360	310	68	0,075	1,7

Connection 3/4F, 3/4" M, 1" F or NPT thread, available on request

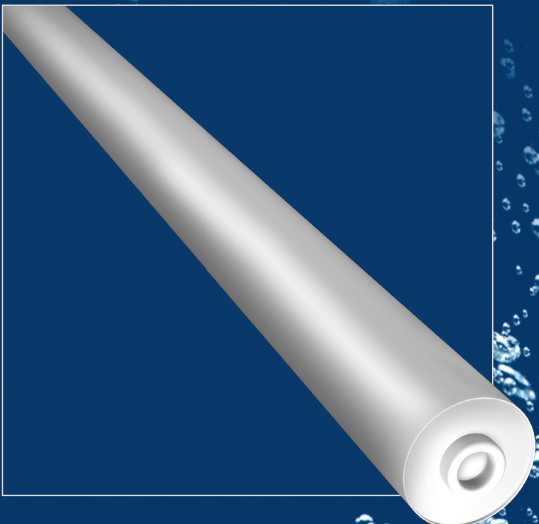
## Ecoquarz®



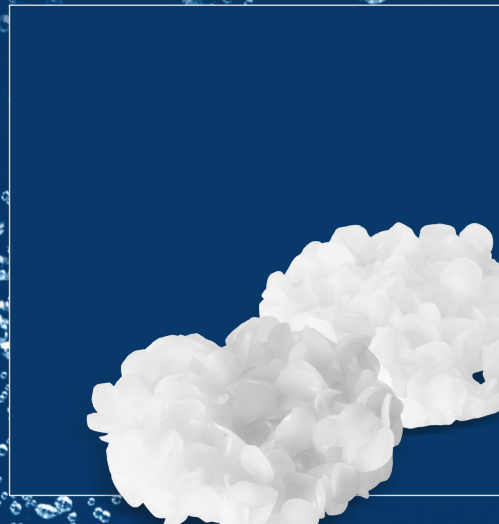
## Tuboflex®



## Newair®



## Newpond®





**ECOQUARZ® DISC DIFFUSER SERIES, OPERATING RANGE**

Model	Pore size $\mu\text{m}$	Range flow rate (Nm <sup>3</sup> /h) min-max	Optimal flow rate (Nm <sup>3</sup> /h)	Standard Thread connection (1" female or other up on request)	Max temperature Celsius/ Fahrenheit	Operating procedure	Application
EC0250-50	60	3-10	6	1" M	80°C/176°F	continuous	Aeration tank
EC0250-100	100	5-12	8	1" M	80°C/176°F	continuous	Aeration tank
EC0250-250	250	7-15	11	1" M	80°C/176°F	continuous	Grid chamber tank

**DIMENSIONS**

Type	Total height (mm)	Diameter total [mm]	Diameter effective [mm]	Over all height above air distributor [mm]	Perforated area [m <sup>2</sup> ]	Total weight [kg]
Ecoquarz Disc	93	300	240	68	0,05	1,5



**ECOQUARZ® TUBE DIFFUSER, OPERATING RANGE**

Model	Pore size $\mu\text{m}$	Range flow rate (Nm <sup>3</sup> /h x ml) min-max	Optimal flow rate (Nm <sup>3</sup> /h x ml)	Assembling mode	Max temperature Celsius/ Fahrenheit	Operating procedure	Application
EC0500-50	60	5-18	11	Tie rod	80°C/176°F	continuous	Aeration tank
EC0500-100	100	10-25	17	Tie rod	80°C/176°F	continuous	Aeration tank
EC0500-250	250	15-30	22	Tie rod	80°C/176°F	continuous	Grid chamber tank

**DIMENSIONS**

Type	Perforation length [mm]	Total length [mm]	Tube diameter [mm]	Wall thickness [mm]	Perforated area [m <sup>2</sup> ]	Total weight [kg]
ECO-501	2 x 250	630	70	15	0,11	4,9
ECO-1001	2 x 500	1130	70	15	0,22	5,7
ECO-1501	2 x 750	1630	70	15	0,33	6,4

# TUBOFLEX®

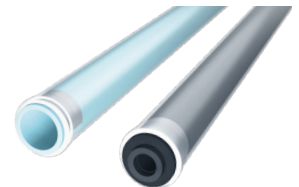


## TUBOFLEX® EPDM TUBE DIFFUSER, OPERATING RANGE

Model	Pore size $\mu\text{m}$	Range flow rate (Nm <sup>3</sup> /h x ml) min-max	Optimal flow rate (Nm <sup>3</sup> /h x ml)	Standard Thread connection (1" and other up)	Max temperature Celsius/ Fahrenheit	Operating procedure	Application
TBA500D50	60	3-12	7	3/4" F	130°C/266°F	continous intermittent	Aeration tank
TBA500D100	100	5-18	11	3/4" F	130°C/266°F	continous intermittent	Aeration tank, Anaerobic sludge digestion
TBA500D150	150	7-25	15	3/4" F	130°C/266°F	continous intermittent	Anaerobic sludge digestion

## DIMENSIONS

Type	Perforating lenght [mm]	Total lenght [mm]	Tube diameter [mm]	Pipe thickness [mm]	Perforated area [m <sup>2</sup> ]	Total weight [kg]
TBA500	500	530	63	4,7	0,105	0,85
TBA750	750	780	63	4,7	0,157	1,15
TBA1000	1000	1030	63	4,7	0,210	1,4



## TUBOFLEX® SILICONE TUBE DIFFUSER, OPERATING RANGE

Model	Pore size $\mu\text{m}$	Range flow rate (Nm <sup>3</sup> /h x ml) min-max	Optimal flow rate (Nm <sup>3</sup> /h x ml)	Standard Thread connection (1" and other up request)	Max temperature Celsius/ Fahrenheit	Operating procedure	Application
TBA500S50	60	3-12	7	3/4" F	230°C/446°F	continous intermittent	Aeration tank
TBA500S100	100	5-18	11	3/4" F	230°C/446°F	continous intermittent	Aeration tank, Anaerobic sludge digestion
TBA500S150	150	7-25	15	3/4" F	230°C/446°F	continous intermittent	Anaerobic sludge digestion

## DIMENSIONS

Type	Perforation lenght [mm]	Total lenght [mm]	Tube diameter [mm]	Pipe thickness [mm]	Perforated area [m <sup>2</sup> ]	Total weight [kg]
TBA500	500	530	63	4,7	0,105	0,85
TBA750	750	780	63	4,7	0,157	1,15
TBA1000	1000	1030	63	4,7	0,210	1,45



**NEWAIR<sup>®</sup> TUBE DIFFUSER, OPERATING RANGE**

Model	Pore size variable	Range flow rate (Nm <sup>3</sup> /h x ml) min-max	Optimal flow rate (Nm <sup>3</sup> /h x ml)	Standard Thread connection (3/4" female other up on request)	Max temperature Celsius/ Fahrenheit	Operating procedure	Application
NWA500	fine	6-12	8	3/4" F	80°C/176°F	continous intermittent	Aeration tank
NWA750	fine	6-12	8	3/4" F	80°C/176°F	continous intermittent	Aeration tank
NWA1000	fine	6-12	8	3/4" F	80°C/176°F	continous intermittent	Aeration tank

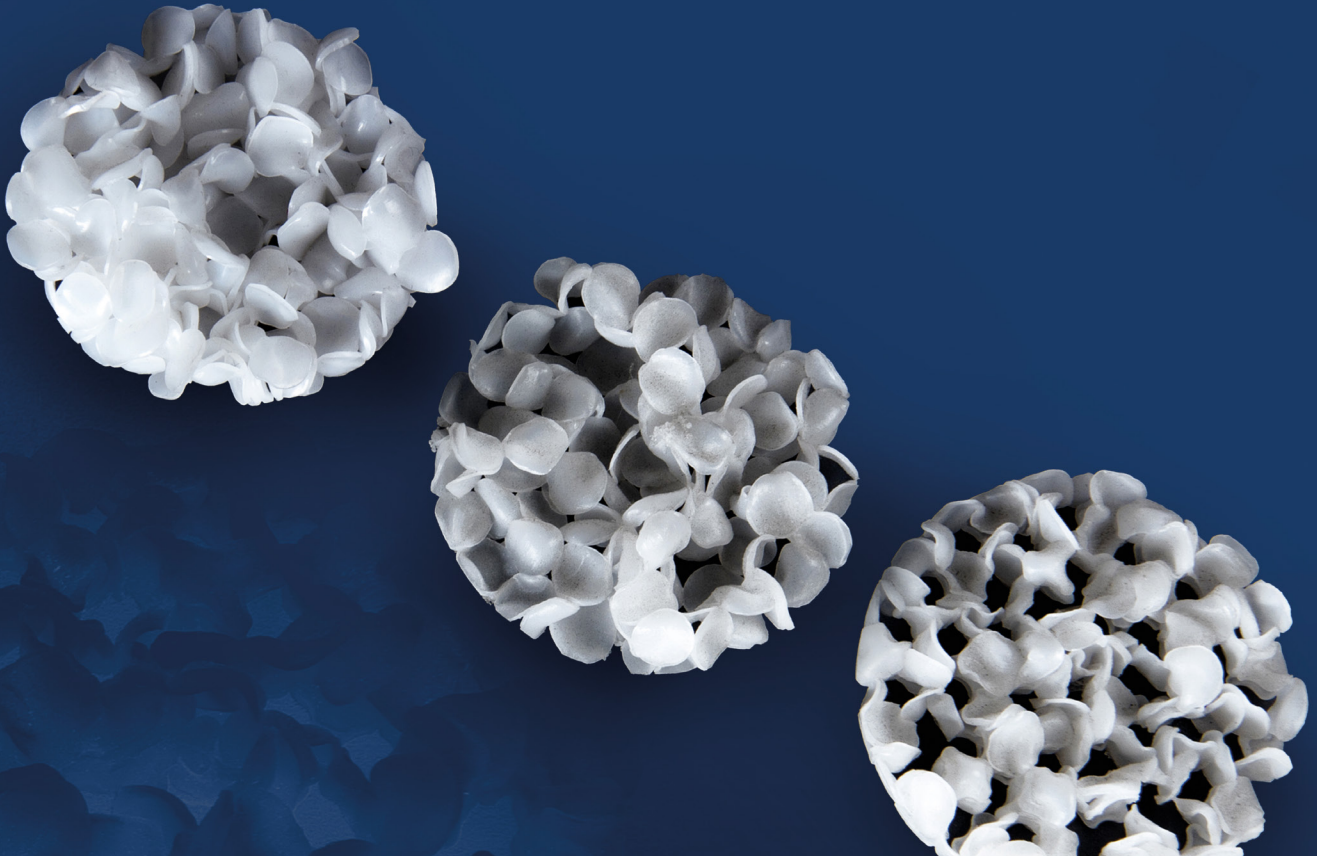
**STANDARD DIMENSIONS**

Aerator length [mm]	Total length [mm]	Tube diameter [mm]	Aeration area [m <sup>2</sup> ]	Adapter	Total weight [g]
500	580	72	0,11	¾ female thread	570
750	830	72	0,17	¾ female thread	760
1000	1080	72	0,23	¾ female thread	950

**SPECIAL DIMENSIONS**

Possible lengths	100 - 1000 mm
Possible adapter forms	½ , ¾ , 1 , 1 ¼ , 2" female thread and on request

# Newpond®



## NEWPOND® BACTERIA CARRIER MATERIAL

Material	special HDPE
Diameter	20 or 55 mm
specific Surface	500 m <sup>2</sup> /m <sup>3</sup>
Bulk density	200 g/l
Material density	0.95 kg/l
Max. Temperature	80 °C

All data are approximate data!

### Product properties

- large usable surface
- high efficiency
- low abrasion of adherent bacteria due to the stream
- easy cleaning and simple handling
- resistant and pH-neutral
- high chemical resistance







Since 1983 your partner for wastewater treatment products.  
Proudly Made in Italy.



Our continuing commitment to quality product, may mean a change without notice of specification, design and other content included in this brochure.

## CONTACT

**Geotek-Tierre S.R.L.**

Phone +39 035 810296

TeleFax + 39 035 810296

email: [info@geotierre.com](mailto:info@geotierre.com)

Via Prato Pieve 54, 24060 Casazza (BG) - ITALY

Certified ISO9001:2015

**Geotek-Tierre SRL**  
Via Prato Pieve 54  
24060 Casazza (BG)  
Italy



Azienda con sistema  
di gestione qualità  
certificato secondo la  
Norma ISO9001:2015

Italia

[geotierre.com](http://geotierre.com)